



Visitor Guide



# A SAFARI ADVENTURE

just outside Melbourne!



Experience an African adventure just  
30 minutes from Melbourne.

Take a guided safari across the open range savannah spotting rhinos, giraffes, zebras, endangered antelopes and more!

Come face to face with a pride of lions, visit the gorillas, see monkeys at play and discover a family of hippos. Spot Australian wildlife including kangaroos and koalas on the Australian Trail.

For an overnight glamping experience, don't miss our luxury safari camp, Slumber Safari!

➤ **BOOK NOW**

[zoo.org.au/werribee](http://zoo.org.au/werribee)

**WERRIBEE  
OPEN RANGE ZOO**

# Welcome

## WERRIBEE AND SURROUNDS

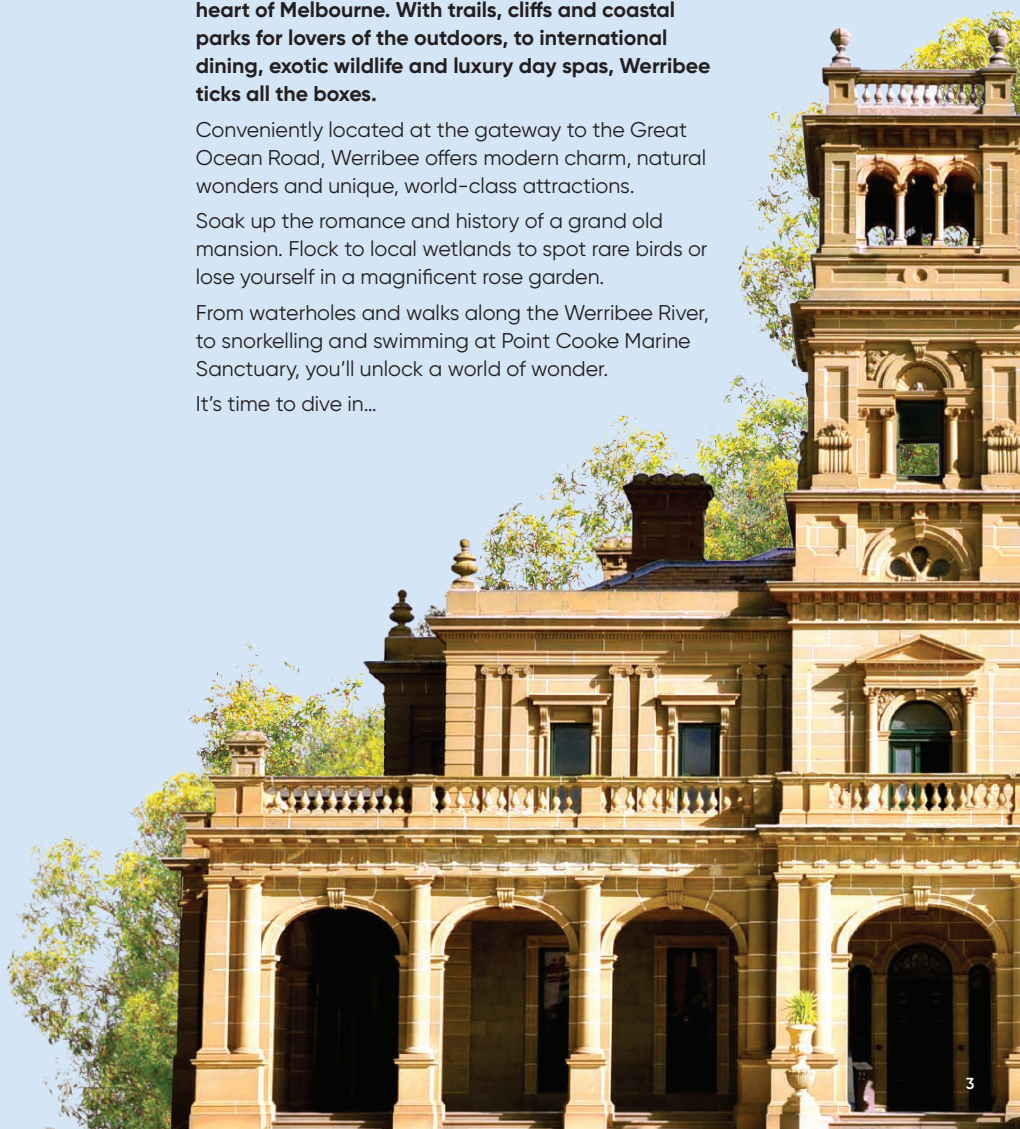
**Land your next adventure just 30 minutes from the heart of Melbourne. With trails, cliffs and coastal parks for lovers of the outdoors, to international dining, exotic wildlife and luxury day spas, Werribee ticks all the boxes.**

Conveniently located at the gateway to the Great Ocean Road, Werribee offers modern charm, natural wonders and unique, world-class attractions.

Soak up the romance and history of a grand old mansion. Flock to local wetlands to spot rare birds or lose yourself in a magnificent rose garden.

From waterholes and walks along the Werribee River, to snorkelling and swimming at Point Cooke Marine Sanctuary, you'll unlock a world of wonder.

It's time to dive in...





## CONTENTS

### SEE AND DO

Werribee Park Precinct	6
Bay West Driving Trail – Route 11	10
Soaring High	12
Saddle Up	14
Where the River Meets the Sea	16
Birds of a Feather	18

### PARKS AND PLAYGROUNDS

20

### EAT, DRINK AND INDULGE

22

### SHOP

25

### SPAS AND WELLBEING

28

### CREATIVE CULTURE

30

### FESTIVALS AND EVENTS

32

### ACCOMMODATION

Stay a While, Rest and Relax 34

### ATTRACTIONS

Directory 39

### ITINERARIES

Family Fun Day 52

Weekend Getaway 52

### SERVICES AND INFORMATION

Getting Here 57

Maps 58

Visitor Information Centre 62

## AUSTRALIA'S FIRST PEOPLES

**Werribee has always been a place rich and diverse in Aboriginal history and culture. We acknowledge the Kulin Nation as the First Peoples of the land.**

For more than 60,000 years, the Kulin lived as custodians of thriving communities along and around the Werribee River. They sustained healthy management of its waterways and natural resources, birds, plants and animals. Their strong spiritual relationship with this land continues.

Head to Werribee River Park where you might spot dulaiwurrong (platypus) at play, or an iuk (eel) rippling through the reeds.

Visit the Harpley Discovery Trail in Werribee to learn about the Indigenous communities who lived west of the river. Groups can book a 'Harpley Yarns' guided tour of the trail with a representative of the Wadawurrung people of the Kulin Nation.

### PLAN YOUR VISIT

Werribee Visitor Information Centre  
03 8734 6006  
visitwerribee.com

  @VisitWerribeeandSurrounds







WERRIBEE PARK

# Precinct

**Kick-start your adventure here. The Werribee Park Precinct boasts multiple world-class attractions all within easy access of each other.**

Head off road on a wild safari, unearth the mysteries and history of a grand mansion, or lose yourself amongst the roses. Whether you stay a weekend or a week, this is the heart of the region and first base for your journey.



## Werribee Open Range Zoo

Feel the freedom of the wild on a safari bus tour at **Werribee Open Range Zoo**. Get up close and personal with giraffes, zebras and rhinos, as they roam the open savannah.

Fall in love with the incredible silverback gorillas, come face-to-face with lions on the prowl and watch hippos splashing in the water.

Explore at your own pace as you wander through the Australian Journey grasslands to spot kangaroos and native wildlife in their natural habitat.

### GET CLOSER

Take home the experience of a lifetime, with one of the Zoo's **behind-the-scenes** encounters; feed giraffes, meet a pride of lions or go adventuring on an **Off Road Safari**.

## Werribee Park Mansion

Be swept away by the romance and grandeur of **Werribee Park Mansion**. Indulge in the history of a bygone era or simply melt into the luxury of a grand old mansion, built in the 1870s by Scottish pastoralists, Thomas and Andrew Chirnside.

Feel like royalty as you wander the hallways and charming old-fashioned rooms. Bring the romance of the mansion to life with an audio tour that delves into the secret lives of servants and scullery maids.

The stunningly manicured formal gardens of the estate include an ornamental lake and grotto, glasshouses and heritage-listed trees, transporting you to another world.

Need more time to soak it all up? Spread out on the magnificent Great Lawn with a picnic and kick back as you ponder the lifestyles of the rich and famous.

### WHAT WAS THAT?

Return to the 19th Century and soak up more of the mansion's atmosphere with **What Was That?** an after-dark theatrical performance.





## Lancemore Mansion Hotel Werribee Park

Rejuvenate, restore and revitalise at the **Lancemore Mansion Hotel Werribee Park**. This retreat oozes indulgence so don't hold back...treat yourself with a weekend (or more!) to enjoy the full experience.

Celebrate each day's adventure with breathtaking views of Werribee Park, while you savour fine wine and dining at the hotel's award-winning **Joseph's Restaurant & Bar**. Why not take all afternoon over a lavish spread with a grand high tea? Or escape to an oasis of calm at the exclusive day spa. This is your chance to relax and let go...

Soak up the tranquillity of the grand library or shoot some pool in the atmospheric billiard room. Swim your laps or enjoy the soothing benefits of a traditional Turkish Hammam chamber. However you choose to indulge, you're guaranteed to feel nourished and renewed.

## Victoria State Rose Garden

Ignite your passion at the **Victoria State Rose Garden**, where more than 5,000 roses bloom from October to May, in a riot of colour and fragrance.

Stop to admire five hectares of perfumed gardens landscaped in the style of a five-petal Tudor Rose.

Better still, pack a picnic and a gold coin donation to cover your entry, for one of the best-value romantic dates on offer. Settle in to fully appreciate why this was the first rose garden outside of Europe to win the World Federation of Rose Societies Award for Garden Excellence.

### HAVING A SPECIAL EVENT?

Enjoy all the opulence of the remarkable Werribee Park Mansion with an exclusive celebration at **The Refectory**. Stunning architecture, luxurious furnishings and those beautiful gardens will elevate your wedding or private function to the next level.



## Treasures beyond the Mansion

Ready to explore? With 10 hectares of open space parkland surrounding the Werribee Mansion, your options are endless.

Start with a stroll through the original **Werribee Park Farm**. Rustic bluestone outbuildings house an authentic collection of farmyard artefacts and a photographic exhibition provides a glimpse into the lives of workers.

You'll find flourishing **vegetable gardens** tended by the Karen refugee community, and a beautiful **heritage orchard** along the Werribee River that still bears some of the fruit originally cultivated for the Chirnside family.



## Werribee Park Golf Club

Tee off with a roar at **Werribee Park Golf Club**, where the nearby zoo provides an inspiring soundtrack. Call the pro shop to book in for 18 holes, hire some clubs and head out to enjoy the unique setting of this championship-length course.

Time your game to finish by sunset, so you can settle back in the clubhouse to fully appreciate the breathtaking views of the **Werribee River** and iconic **K Road Cliffs**.



## Shadowfax Winery

Why not ease into your adventure with a glass of wine, live jazz and delicious Italian inspired meals? Within easy walking distance of Werribee Park Mansion, **Shadowfax Winery** delivers award-winning, handcrafted wines in a striking, natural setting.

Stroll up the gum-lined driveway before you make a beeline for the stylish, rustic restaurant to start your feast. Try one of the famous woodfired pizzas and savour the flavours of authentic Mediterranean food, enhanced with handpicked vegetables and herbs from the kitchen garden.

But we're here for wine, right? The rich red soil of Werribee provides the ideal base for growing Minnow and Shiraz grapes. The cellar door is open daily, so you have every excuse to try them.

Bring it all together with a glass of award-winning Shiraz and a delicious tasting plate, while enjoying live music. Spread out on the lawn in summer or cosy up inside over winter.

## Werribee Park National Equestrian Centre

Join in the thrill of world-class horse sports at the **Werribee Park National Equestrian Centre**. Meander through the charming historic horse stables or cheer on competitors at the many equestrian events and polo matches.

## BAY WEST DRIVING TRAIL

# Route 11

**Taking in many of our best-loved attractions, this relaxing, self-paced driving tour captures the essence of the region, while dishing up some amazing food and wine experiences en route.**

Follow the Route 11 signs or pick up a map from the Werribee Visitor Information Centre, then hit the road to discover all this and more.





The road less travelled is a path to discovery. Follow the Bay West Driving Trail Route 11 for a journey full of surprises. Our top picks are...

### WERRIBEE PARK PRECINCT

Bookend your road trip with a visit to the many attractions in the Werribee Park Precinct and pick up some local drops to take home with you at Shadowfax Winery.

### MARKET GARDENS

The Werribee South market gardens are thriving in rich, red soil. This is the heart of the Melbourne food bowl.

### RAAF MUSEUM

Hear tales of courage and adversity at this free museum and time your visit to take in the interactive flying displays on Tuesday, Thursday and Sunday at 1pm.

### CAMPBELLS COVE

Admire the colourful and quirky, heritage-listed boatsheds that have brightened the foreshore since the 1920s.

### SANCTUARY LAKES GOLF CLUB

Spend an afternoon out on the green at this Greg Norman-designed championship-length golf course.



### K ROAD CLIFFS

Take in the views at the stunning K Road Cliffs rising up from the Werribee River.



### POINT COOK COASTAL PARK

The park is a haven for birdwatchers, nature lovers and families. Climb the observation tower for a 360-degree birds-eye view, wander around the original homestead of the Chirnside family or fossick along the beach at low tide.



### WYNDHAM HARBOUR

Stroll along the waterfront at Wyndham Harbour, where an ultra-modern marina provides a glamorous hub for recreational boating and aquatic events.

### WERRIBEE SOUTH FORESHORE

Stretch your legs and take a walk along Werribee South Foreshore, with views across Port Phillip Bay. Hit the water for fishing, boating, spectacular kayaking and jet skiing, amble amongst the Norfolk Pines or unwind with a picnic.



## SOARING

# High

**Explore the remarkable history of Australia's military aircraft at the RAAF Museum – the birthplace of the Australian Flying Corps and the Royal Australian Air Force.**

Massive hangars house original and replica aircraft, many of them meticulously restored by volunteers. From fighter jets to Tiger Moths, these impressive planes were at the forefront of Australia's aviation history.

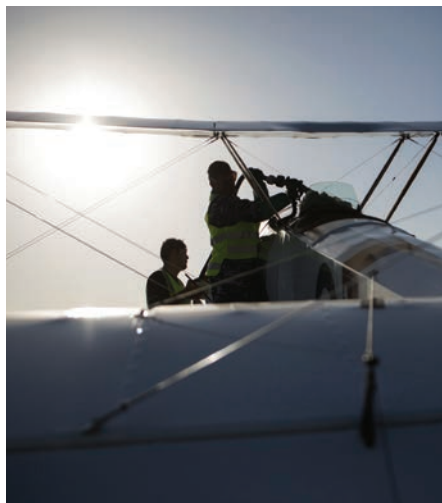
Delve deeper and you'll discover unique insights into the second oldest air force in the world with multimedia displays, exhibitions and restoration projects.

Feeling inspired? Zip up your flying jacket and don your goggles to take a **Vintage Tiger Moth Joy Flight** from the RAAF Base. Enjoy the wind on your face from the open cockpit as you fly over Melbourne or ramp up the thrills with the loops and rolls of an aerobatic flight.

### THE SKY'S THE LIMIT

The ultimate family adventure, the biennial **Australian International Airshow** is held right on our door step at Avalon Airport. Jet fighters, bombers, helicopters and vintage craft fill the skies with aerobatics, attracting plane spotters and aviation buffs from across the globe.

For a hands-on experience closer to the ground, head to the **B-24 Liberator** hangar, home of Australia's only surviving World War II long-range bomber. Step back in time as you climb inside the bomb bay and marvel at the restoration of the patchwork fuselage, worked on by a dedicated team of volunteers since 1988.







# Saddle

UP

**Here's your chance to immerse yourself in all things horsey.**

From show jumping and polo to dressage and racing, visitors from across the globe gather in Werribee for equine events and activities year-round.





Big-ticket equestrian events are hosted at the world-class **Werribee Park National Equestrian Centre**, where interstate and international competitors and visitors gather for major equestrian events and polo competitions.

Join the professionals at **Werribee Mansion Polo Grounds** for high-class tournaments and polo events. Home to the Victorian Polo Association, this is where the world's best vie for the prestigious Melbourne Polo Cup – the most highly sought-after victory on the polo calendar.

Get up close to the racetrack and enjoy the relaxed atmosphere of a country race meeting at **Werribee Racecourse**. Werribee Racing Club offers authentic racing events for the whole family, with a strong racing history that dates back to the 1800s.



#### IN TOWN FOR THE MELBOURNE CUP?

During the Melbourne Spring Racing Carnival Werribee Racecourse hosts the top international horses in the carnival, at the **Werribee International Horse Centre**.

Horse whisperers should head here early morning to watch the best of the bunch run through their paces on the track.



WHERE THE  
RIVER MEETS THE

Sea

**Werribee is teeming with opportunities to explore above and below the water.**

Moor your yacht or powerboat at **Wyndham Harbour**, or stay locally to enjoy all the services of this stunning marina. A perfect base for exploring Port Phillip Bay, Wyndham Harbour is a hub for recreational boating, aquatic events, regattas and races. With waterfront cafés and restaurants, the marina offers a retreat from the pace of city life, with all the comforts.







Extend your waterfront experience with a wander along **Werribee South Foreshore**, where the river meets the sea. Stop for a family picnic or pick up the pace and launch your vessel at the popular boat ramp to enjoy water sports of all varieties.

Stroll, cycle, fish, kayak or simply relax along the banks of the **Werribee River**. Shared trails line the banks of Werribee River Park, which winds through the heart of the region. Keep an eye out for native wildlife and marvel at the spectacular **K Road Cliffs**.

Throw in a line under the gnarled branches of a river gum or set off on your own fishing adventure with **Magnet Fishing Charters**, who will take you out onto Port Phillip Bay and beyond to explore some of Victoria's best fishing spots.

Wildlife lovers are spoilt for choice at the **Point Cooke Marine Sanctuary**, home to a variety of sea life and visiting Bottlenose Dolphins. As Victoria's largest marine park, this is a hotspot for snorkellers and divers.



### SHIPWRECK!

While marvelling at the abundant sea life on the reef of **Point Cooke Marine Sanctuary**, divers and snorkellers can explore two heritage-listed shipwrecks, *The Diane* and *The Henrietta*.

*The Diane* was a 40-foot wooden cutter that sprang a leak in 1877 off Point Cook and was run ashore on the reef for the safety of those on board. *The Henrietta* ran aground in 1940, with the crew (and ship's cats) safely rescued.



BIRDS OF A

# Feather

**Join twitchers from far and wide who head to Werribee's wetlands to catch a glimpse of rare and exotic birds in their natural habitat.**

Home to more than 300 species, with some migratory shorebirds flying in from as far as Siberia, Japan and Alaska, the local wetlands are among Australia's top birdwatching sites and internationally recognised bird habitats under the Ramsar Convention.



Enter the peaceful haven of the **Point Cook Coastal Park and Cheetham Wetlands**, one of Australia's most important wetlands.

Head to 'The Tower' at the southern end of the Cheetham Wetlands for a true 'birds eye' view. Whether you're a budding or seasoned birdwatcher, you'll be touched by the astonishing number and variety of birds that find refuge in these wetlands.

Likewise, the diversity of the **Western Treatment Plant** is considered second only to Kakadu in Australia. This is your chance to spot the elusive and critically endangered Orange-bellied Parrot. Scan the skies for a Wedge-tailed Eagle or enjoy watching water birds wading in the shallows.

Take your time and discover lagoons, estuaries, salt marshes and the beautiful Lake Borrie during your visit.

Pick up a day pass at the Western Treatment Plant Monday to Friday, or from the **Werribee Visitor Information Centre** seven days a week.





# Parks

## AND PLAYGROUNDS

**Mamma Knows West's mission is to bring together fun, activities and family adventure. Meet Sammi and Mandy, otherwise known as the Mammamas. They are celebrated for passing on local knowledge on places to go for a great day out.**

*Mamma's parks and playground picks have all the inspiration you need to uncover something new for you and the crew to enjoy.*

*"It's always fun discovering new playgrounds and there are plenty to try in this region."*

- The Mammamas





The West boasts some beautiful parks spanning right across our suburbs. Each is unique and best of all, packed with free fun for the whole family. Mamma's top picks are...



## Presidents Park

If you're in need of some company, plenty of equipment with loads of adventure then wow, this is the spot for you. The playground is mostly fenced with a wooden train, cubby houses, slides, swings, a climbing wall, monkey bars, skate park and more – it's impossible not to find something that both the little ones and the bigger ones will enjoy. *Mamma* loves the party atmosphere here, it's literally teeming with families, so plenty of playmates and parents to hang out with!

**300 Mcgrath Road, Wyndham Vale**

## Safari Park

The animals here at Safari Park are an ode to Werribee Open Range Zoo! You will love soaring to the sky in the 6.2 metre giraffe nest swing – this swing really can fly high! The one-tonne rhino is perfect for clambering on, in, and hanging upside down from too! And check out the hippos having a lazy swim. The colours are great and there is even some fun animal-themed fencing so the kids can take a peek through the animals' eyes at all the diggers hard at work building houses. So clever!

**383 Black Forest Road, Werribee**



## Greens Road Adventure Playground

The first thing you notice is how high that tower is. It is heart-clutchingly high. Then the slide – long and, yep, high! Eeek! *Mamma* says this part of the playground is only for the careful and the brave. There is plenty of space and other great equipment too, like the secondary climbing net, flying fox, swing, seesaw and spinning rides for the littlies. There is also a BBQ, pavilion and bench seats.

**275 Greens Road, Mambourin**

## Harpley Estate Adventure Playground

It's huge and filled with so many bits and pieces that the little ones will need a good chunk of the morning or afternoon to explore it. There's a slippery slide, a climbing fort, two flying foxes, a hammock swing, sand pit, wobbly bridge and lots of little statue animals to uncover. This wonderful space is just what you need to be inspired to get in some outdoor playtime.

**Black Forest Road, Werribee**

## Village Kids

Did you know there is a playground at Werribee Open Range Zoo? Seriously this place has it all with a slide, tunnels, wooden planks and stepping stones, turrets, trees, a large nest swing and more. It is blended into the 'look' of the zoo and is a great spot for a picnic and debrief post safari. Best of all, you have everything you need here to stay for a well... ummm... the whole day!

**Werribee Open Range Zoo, K Road, Werribee**

### LOCAL TIP

Check out more of *Mamma's* favourites:  
[mammaknowswest.com.au](http://mammaknowswest.com.au)

EAT, DRINK AND

# Indulge

**We asked one of Melbourne's most well known foodies Richard Cornish to cast a spotlight on his favourite places to eat in Werribee and Surrounds.**

*"What I love about visiting Werribee is that you're out of the city without even leaving it. You can walk along a deserted beach, build up an appetite and eat like a king without breaking the bank."*

- Richard Cornish



Richard Cornish is an acclaimed Melbourne based food writer, a regular for The Age and author to several cookbooks. Richard's top picks are...

## Bruno's Deli

A 35-year-old Italian deli, café and patisserie with a rococo leather lounge under a mural of Tuscany. Order a traditional lasagne or a panini laden with cheese and finely sliced mortadella and take a seat at the old table. The ambience is community based with the owner Mario chatting to clients while they shop for imported Italian groceries, cheese and salume. Old school and authentic.

**125 Watton Street, Werribee**



## Notorius Espresso

In the heart of Werribee this long, modern café also serves breakfast and light meals and has a lively alfresco area. Here, owner Hadi Chami and his team are true coffee lovers, bringing single origin estate coffees to their customers, served with a shot of sparkling mineral water on the side.

**81 Watton Street, Werribee**

*"From the new suburbs to the old centres there's a huge range of offers from around the globe, from street food to fine dining."*  
- Richard Cornish

## Wyndham Cache

The farmgate shop for an egg farm that grew into an impressive modern deli and restaurant. Many people come for the farm fresh eggs, local vegetables from neighbouring farms, cheese and salume. Many come for the bistro next door overlooking the market gardens.

**243 K Road, Werribee South**

## Wyndham Harbour

Wedged between market gardens and Port Phillip Bay, the walks along the coast here are quite dramatic, offering views to the Bellarine and Mornington Peninsulas. Finish up with fish and chips from **Sam's Fish and Chips** as a reward. There is also a pop-up pizza place called **Ohana** housed in shipping containers on the headland offering good pizza, beer and wine.

**Quay Boulevard, Werribee South**





## Shadowfax Winery

Arrive via a dramatic snow gum-lined drive to discover a beautiful, rusted yet impressive architecturally designed building. Shadowfax is a working winery with a cellar door and restaurant. With rich red soil, the Werribee vineyard is home to Minnow and Shiraz grapes. Come to the polished wood bar to try the wines made and cellared onsite. Stay for lunch and enjoy excellent, wine friendly food from charcuterie to pizza in the casual modern dining room. After lunch relax on the rolling lawn or wander next door and explore the grounds of Werribee Park Mansion.

**K Road, Werribee South**



## Sanctuary Lakes

Unassuming, but for a great authentic feed of South East Asian favourites, head to the shopping mall at Sanctuary Lakes. Here you'll find good Malaysian food at **Kampung Story** offering an exceptional lunch special that could be spring rolls, beef rendang, roti and sweet tea.

**Nyonya House** has a selection of dishes from Peranakan Chinese Malay cuisine including Nyonya chicken and rice along with other popular dishes such as char kway teow, the popular fried flat noodle dish.

**300 Point Cook Road, Point Cook**

## The Park

A great pub that knows its way around craft beer, 16 beers on tap and run by a team whose sole aim is to keep you happy. A big mid 20th Century build with polished concrete floors, welcoming fireplace in winter and beer garden. The seasonal menu and boutique beer experience is a must.

**12 Watton Street, Werribee**

### LOCAL TIP

For more from Richard Cornish head to:  
[richardcornish.com](http://richardcornish.com)





# Shop

Snap up popular international labels in department stores and shopping centres or find hidden shopping gems in leafy neighbourhood streets.

Bustling **Watton Street** is the heart of Werribee. Along the broad, tree-lined boulevard you'll find unique stores and passionate locals behind the counter – it's the kind of place where staff know your name and your coffee order.

Speaking of coffee, there's an impressive brunch scene, street eats and dinner options to keep hunger at bay. With alfresco dining, riverside walks and a sculpture trail to enjoy, this is shopping at its most leisurely.



For your favourite local and international brands and a buzzy urban diner, head to **Pacific Werribee**. This airy, light-filled shopping centre boasts a great mix of fashion, homewares and entertainment, with more than 300 stores conveniently located on one level. Plus, if your feet need a break, you can catch a movie at the cinema or indulge with a Gold Class experience.

At **Point Cook Town Centre**, you'll find more than 200 specialty and big-brand stores complemented with comfortable cafés and lunch break spots.



# MY GO TO

**MYER**

**H&M**

**UNIQLO**

**T.K. MAXX**

**24  
hours**

**Kmart**

With over 300 fashion, food and lifestyle stores.  
Visit [pacificwerribee.com.au](http://pacificwerribee.com.au)

Cnr. Derrimut Road & Heaths Road, Werribee | Ph. 9749 5111

**PACIFIC***werribee*



# Spas AND WELLBEING

**Escape your every-day and take time to nurture body and soul. Relax. Rejuvenate. Restore.**

It's not hard to find your indulgence of choice. Werribee knows how to spoil you.







For some serious indulgence, book in a weekend retreat at **Lancemore Mansion Hotel Werribee Park**. Soak up the serenity with a hot rock massage, followed by a calming facial, before surrendering yourself to the soothing benefits of the traditional Hammam chamber. Fancy a body wrap? Perhaps you'd prefer to slip into the indoor pool for some lazy laps, or simply relax poolside with a cup of herbal tea.

Werribee and Surrounds has a lot to offer for those looking to rejuvenate. Opt for a healing detox at **Seasons 5 Spa Retreat** or lavish your weary feet with a luxury pedicure at **Fifth Element Day Spa**.

Take your whole self on a sensory journey with a sublime half-day treatment at **Endota Day Spa**, or absorb all the goodness of salt therapy at **Salts of the Earth**.





CREATIVE

# Culture

Wander down a laneway to discover the latest street art, go sculpture spotting and get the scoop on new and emerging artists.





From iconic public art to live music and visual art, Werribee boasts a thriving arts scene.

In Werribee's own 'West End' precinct you'll find the **Wyndham Cultural Centre**, encompassing the Art Gallery and the Theatre, with a contemporary program of exhibitions, music, comedy and family shows.

Entry to the **Wyndham Art Gallery** is free, with an exciting program featuring established and emerging artists. It's a small space but packs a punch, with original exhibitions that tap into the area's rich social and cultural character.

Further afield, the region has a terrific collection of sculpture and public art, beginning with an easy to follow trail along Watton Street in Werribee.



#### ON THE SCREEN

Feel like you've stumbled onto a movie set? The region's sweeping grassland plains, waterways and historic buildings have provided the backdrop for films including *The Dressmaker*, *Gallipoli*, *Ned Kelly* and most famously, *Mad Max* which featured the heritage-listed **Little River Bed and Breakfast**.





FESTIVALS AND

# Events

Moments to share. Music to celebrate. Food and wine to savour. Here's some of our favourite events and festivals that only Werribee can throw...





## JANUARY

### SO FRENCHY SO CHIC

Listen. Dance. Dine. Recline. A French-inspired festival dedicated to life's simple pleasures.

**Werribee Park | [sofrenchysochic.com](http://sofrenchysochic.com)**

## MARCH

### FROMAGE A TROIS CHEESE FESTIVAL

Where cheese-lovers unite for Melbourne's tastiest day of the year!

**Werribee Park | [fromageatrois.com.au](http://fromageatrois.com.au)**

## JUNE

### MELBOURNE INTERNATIONAL 3 DAY EVENT

See Australia's best riders and horses tackle this cross-country course through the rolling grounds of Werribee Park.

**Werribee Park | [m3de.com.au](http://m3de.com.au)**

## NOVEMBER

### LOST LANDS

A magical, three day music and arts festival for families.

**Werribee Park | [thelostlands.com.au](http://thelostlands.com.au)**

## STATE ROSE & GARDEN SHOW

The ultimate garden party among the blooms, with music, food and plant care tips.

**Victoria State Rose Garden  
[stateroseandgardenshow.com.au](http://stateroseandgardenshow.com.au)**

## ONE ELECTRIC DAY

A perfectly shareable day of live music out on the rolling lawns.

**Werribee Park | [oneelectricday.com.au](http://oneelectricday.com.au)**

## SUNSET SAFARI

Adventure onto the savannah for a guided sunset tour and enjoy an African feast. Available from November to March.

**Werribee Open Range Zoo  
[zoo.org.au/werribee](http://zoo.org.au/werribee)**

## DECEMBER

### WERRIBEE CUP

A great day of country racing with fashions on the field and entertainment.

**Werribee Racecourse  
[country.racing.com/werribee](http://country.racing.com/werribee)**

## LOCAL TIP

For the full calendar of events and festivals head to [visitwerribee.com](http://visitwerribee.com)



STAY A WHILE, REST AND

# Relax

**A weekend or a week? We have accommodation options to suit every budget and occasion, giving you plenty of time to relax and explore at your own pace.**

Create lifetime memories with a truly unique experience like the Slumber Safari at **Werribee Open Range Zoo**. Or opt for a family-friendly motel or a cabin by the sea. Spoil yourself with luxury accommodation at the **Lancemore Mansion Hotel Werribee Park** (winner of Condé Nast Traveler awards) or find a cute B&B, rich in character.



# LANCEMORE

## MANSION HOTEL WERRIBEE PARK



FOR MOMENTS  
OF RELAXATION,  
INDULGENCE  
AND ESCAPE

[lancemore.com.au](http://lancemore.com.au)







## QUEST WERRIBEE

**Quest Werribee** serviced apartment style hotel rooms offer guests a relaxed and comfortable Werribee accommodation experience perfect for short or long stays. Quest Werribee has 49 serviced apartments including studios, one, two and three bedroom apartments. Studios are the perfect alternative to a hotel room with a well-equipped kitchenette. The one, two and three bedroom apartments, complete with fully equipped kitchens and laundry facilities, are ideal for families, colleagues or larger groups looking for a 'home away from home' experience.

Reception hours: Monday to Friday 7am-10pm, Saturday 8am-10pm, Sunday 8am-9pm.

**69 Synnot St, Werribee | 03 8744 6000**  
**questwerribee@questapartments.com.au | questwerribee.com.au**



## WERRIBEE PARK MOTOR INN

**112-124 Duncans Rd, Werribee**  
**03 9741 7222**  
**info@werribeeParkMotorInn.com.au**  
**www.werribeeParkMotorInn.com.au**

Located in the heart of Werribee, Werribee Park Motor Inn offers immaculately clean queen, twin, spa and 2 bedroom family rooms all on ground level. A 5-minute drive to the Equestrian Centre, Zoo, historic Mansion and Rose Garden. Close to restaurants and cafés along iconic Watton Street. Free Wi-Fi, Foxtel, BBQ and pool, cooked and continental breakfast to your room.

Wyndham City including its officers, agents and contractors ("Publisher") has made every endeavour to ensure that details in this publication are correct at the time of printing, but accept no responsibility for any inaccuracy or mis-description, whether by inclusion or omission, nor does the Publisher accept any responsibility for subsequent change or withdrawal of details or service shown which are subject to alteration without notice. Any standard of venue and/or services contained in this publication are indicative only and are based upon information provided to the Publisher. Accordingly, the Publisher makes no representation of guarantee in relation to the standard, class or fitness for purpose of that venue or service.

Photography: Wyndham City, Visions of Victoria, Anne Morley, Parks Victoria and supporting advertisers.



This guide is printed on Australian made Grange Offset. Distributed by Ball & Doggett, it is PEFC and ISO 14001 EMS.  
**Frank Lane JN\_13447**



### A GARDEN HIDEAWAY BED AND BREAKFAST

14 Baggot Drive, Hoppers Crossing  
info@agardenhideaway.com.au

0409 018 141  
agardenhideaway.com.au

Self-contained villa style accommodation with kitchenette, QS bed, heating, cooling and undercover BBQ area. Within walking distance to shopping precinct.



### A POETS CORNER

2 Henry Lawson Walk, Point Cook  
apoetscorner@gmail.com

0431 689 570  
apoetscorner.com.au

One bedroom, self-contained apartment, offering a unique experience in a friendly, relaxed environment. Just a short stroll to the Point Cook Town Centre.



### AMAWIND APARTMENTS

Address given on booking  
apartments@amawind.com

03 9397 4147  
amawind.com

Pet-friendly, 1, 2 and 3 bedroom villas/houses at various locations within Wyndham. All homes are fully furnished with open plan living. Wi-Fi available on request.



### BLOOMINGDALES B&B

40 Greaves Street, Werribee South  
bloomingdales@westnet.com.au

0405 527 303  
bloomingdaleswerribee.com.au

A retreat in the heart of Werribee. Quiet, private and self-contained unit. Easy walk into the town of Werribee for cafés, restaurants, shopping and train.



### CLUB LAVERTON MOTEL

15 Aviation Road, Laverton  
reservations@clublaverton.com.au

03 9369 1811  
clublaverton.com.au

31 rooms including twin, queen, deluxe and executive rooms. Adjoining rooms for families. Cable TV and in-house movies. Located in the heart of Laverton.



### LANCEMORE MANSION HOTEL WERRIBEE PARK

K Road, Werribee South  
reservations@mansionhotel.com.au

03 9731 4000  
lancemore.com.au/mansion

The perfect luxury getaway set in 10-acres of formal gardens with an indulgent day spa, restaurant, indoor pool, library with fireplace, snooker room and tennis.



### LITTLE RIVER BED AND BREAKFAST

16-18 Flinders Street, Little River  
mail@littleriverbnb.com.au

03 5283 1858  
littleriverbedandbreakfast.com.au

It's always a perfect time to stay. Two king and queen size guest rooms, each with own ensuite. Open fire and a cooked breakfast when you wake.



### LITTLE RIVER HOTEL

10-14 Flinders Street, Little River

03 5283 1113  
facebook.com/thelittleriverhotelvictoria

An old country town pub with character galore, a warm atmosphere, friendly service and motel-style accommodation.



### MONTE VILLA MOTOR INN & RECEPTION CENTRE

78 Old Geelong Road, Hoppers Crossing  
stay@montevillamotorinn.net.au

03 9748 4277  
montevilla.com.au

34 rooms including spa rooms. All rooms have heating and cooling, microwaves, Wi-Fi and free Foxtel. Onsite licensed restaurant, parking, BBQ and laundry.



### QUEST SANCTUARY LAKES

9 Greg Norman Drive, Sanctuary Lakes  
sales.sanctuary@questapartments.com.au

03 9394 2100  
questsanctuarylakes.com.au

43 superbly appointed 1 & 2 BR townhouses. Complimentary access to offsite gym, lap pool, sauna and spa. Access to golf course and flood-lit tennis courts.



### QUEST WERRIBEE

69 Synnot Street, Werribee  
questwerribee@questapartments.com.au

03 8744 6000  
questwerribee.com.au

50 spacious studios, 1, 2 and 3 BR fully serviced apartments with balconies and also 1 BR access apartments. Restaurant charge back, gym, Foxtel and Wi-Fi.



### SEASONS 5 RESORT & SPA

454 Point Cook Road, Point Cook  
contact@seasons5.com

03 8376 5300  
seasons5.com.au

Flexible function venue with 38 guest rooms overlooking beautiful landscaped gardens. Indoor heated pool, fitness centre, day spa, onsite restaurant, free Wi-Fi.



### SLUMBER SAFARI

K Road, Werribee South

1300 ZOOSVIC  
www.zoo.org.au/werribee

Slumber Safari brings together unique accommodation with a fully hosted African experience at Werribee Open Range Zoo, just 30 minutes from Melbourne.

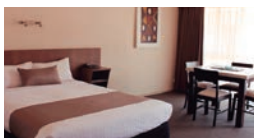


### WERRIBEE MOTEL AND APARTMENTS

6 Tower Road, Werribee  
melwer@bigpond.net.au

03 9741 9944  
werribeemotelapartments.com.au

26 rooms including spacious deluxe rooms, standard budget rooms, family units and 2 BR fully self-contained apartments with free Wi-Fi and Foxtel in every room.



### WERRIBEE PARK MOTOR INN

112-124 Duncans Road, Werribee  
info@werribeeparkmotorinn.com.au

03 9741 7222  
werribeeparkmotorinn.com.au

Family run motel catering for all travellers with 24 rooms ranging from standard queens, spa, deluxe and family rooms. Onsite parking, outdoor pool and spa.



### WERRIBEE SHORT STAY VILLAS & ACCOMMODATION

150 Bulban Road, Werribee  
info@werribeeshortstays.com.au

03 9749 7352  
werribeeshortstays.com.au

Brand new 1 and 2 BR self-contained villas offering 'home away from home' comfort with all modern conveniences. Available for overnight or extended stays.



### WERRIBEE SOUTH CARAVAN PARK

39 Beach Road, Werribee South  
caravan.park@wyndham.vic.gov.au

03 9742 1755  
werribeesouthcaravanpark.com

A friendly park offering grassed powered sites with easy access to amenities and ocean views. The best value 2 BR holiday, deluxe and access friendly cabins.



### WESTSIDE HOTEL

Corner Leakes & Fitzgerald Rds, Laverton North  
westside.hotel@alhgroupp.com.au

03 9369 2300  
westsidehotel.com.au

Located close to the Laverton Industrial Park the West Side Hotel offers standard and family rooms. Ensuite bathroom, Foxtel and continental breakfast.



# Attractions

## DIRECTORY

Explore the great outdoors, take off in a Tiger Moth, tee off on the green or indulge in a little retail therapy.

Your adventure starts here.



# A CITY THAT'S BIG ON FLAVOUR



Eat and drink your way through Werribee City Centre, from authentic street eats and cosy cafés to riverside dining and craft brews.

[f werribeecitycentre](#)



WERRIBEE

CITY CENTRE

# Wyndham Art Gallery

**Great Art. Deep West.**  
Discover new and emerging voices  
and bold perspectives.



Image: Pierre Mukeba - Neglected Beauty

177 Watton Street  
Werribee, VIC 3030  
(03) 8734 6021

#deepwest  
[wyndham.vic.gov.au/arts](http://wyndham.vic.gov.au/arts)

wyndhamcity





## Werribee Park Golf Club

350 K Road, Werribee South Vic 3030

Admin: Ph 03 9742 1397

Pro Shop: Ph 03 9742 1754

Website: [www.werribeeparkgolf.com.au](http://www.werribeeparkgolf.com.au)

Email: [admin@werribeeparkgolf.com.au](mailto:admin@werribeeparkgolf.com.au)

Facebook: [WerribeeParkGolfClub](https://www.facebook.com/WerribeeParkGolfClub)

## The Views, Function Bar & Grill

Ph: 03 8742 0960

### ABOUT US

Werribee Park Golf Club is located on K Road within the beautiful Werribee Park Tourism Precinct offering the region's best experiences including: Werribee Open Range Zoo, The Mansion Hotel & Spa, Victorian State Rose Gardens, The National Equestrian Centre, Shadowfax Winery and nearby Wyndham Harbour. Guests are welcome to enjoy our lounge facilities after golf.

The fully licensed The Views Bar and Grill Restaurant offers scenic views of the golf course and the breathtaking K Road Cliffs – BOOKINGS ESSENTIAL.

### COURSE FEATURES

An 18 hole Kevin Hartley designed Championship Course with strategic planting of trees, bunkers, lateral water hazards, pristine chipping areas, exceptional putting greens, and a state-of-the-art Practice Driving Range with 12 Hitting Bays: 260m Drive

### PRO SHOP

Club Repairs  
Golf Lessons & Professional Coaching  
Club Fittings  
Driving Range  
Golf Equipment & Golf Apparel  
Golf Cart Hire  
Sale of Refreshments



**INDOOR FUN FOR EVERYONE!**

# WYNCITY

BOWL & ENTERTAINMENT

**TENPIN BOWLING, LASER TAG, BUMPER CARS, MINI GOLF,  
ARCADE, LICENSED BAR, RESTAURANT, PIZZA & MUCH MORE!**



**36 Wallace Avenue Point Cook, VIC 3030  
Ph: 9236 8383 [www.wyncity.com.au](http://www.wyncity.com.au)**

## RAAF MUSEUM POINT COOK

### OPENING HOURS:

10am-3pm  
Tuesday-Friday

10am-5pm  
weekends and  
public holidays

*Closed Mondays,  
Christmas Day and  
Good Friday*



**ENTRY TO THE RAAF  
MUSEUM IS FREE**



**RAAFMUSEUM**  
POINT COOK

03 8348 6040 [www.airforce.gov.au/raafmuseum](http://www.airforce.gov.au/raafmuseum) [f /RAAF.Museum](https://www.facebook.com/RAAF.Museum)



### POINT COOK HOMESTEAD GHOST TOURS

1 Point Cook Homestead Rd, Point Cook  
1300 390 119  
info@lanternghosttours.com  
www.pointcookhomestead.com.au

Discover the home of the Chirnside family. Located at the end of an isolated country track, you will be transported to another world. Discover the 1850s homestead, outbuildings and family secrets on this secluded, haunted 25 acre property.



### BIRD WATCHING AT WESTERN TREATMENT PLANT

Western Treatment Plant, Werribee  
131 722  
birdwatching@melbournewater.com.au  
www.melbournewater.com.au

The Western Treatment Plant is one of Australia's best birdwatching sites, with over 280 bird species recorded, including various rare and migratory birds. Permits are available to access birdwatching areas. You can find out more on the Melbourne Water website by searching 'birdwatching'. Short-term permits are available to one-off interstate and international visitors at the Werribee Visitor Information Centre.

# FIFTH ELEMENT DAY SPA.

SKIN. BODY. BEAUTY.

Whatever you need we will be waiting.

Phone 9974 1444. 90a Watton Street Werribee.

fifthelementdayspa.com.au





## FAIRY PARK

2388 Ballan Rd, Anakie  
03 5284 1262  
info@fairypark.com  
fairypark.com

A storybook world with animated fairytale scenes in castles, cottages and caves including Snow White, Red Riding Hood, Cinderella, Pinocchio and many more. Visit Camelot – a medieval themed playground that will keep the kids busy for hours.

Spectacular settings and breathtaking scenery. A great day trip. Discover the magic.

Is It  
**HAUNTED?**

listen,  
laugh,  
scream

ESSENCE PRODUCTIONS Night theatre at Werribee Park.  
www.essenceproductions.com.au



## The Italian Sports Club of Werribee

[www.iscw.com.au](http://www.iscw.com.au)

**03 9741 1225**

601 Heaths Road, Werribee

Situated a few short kms from the town centre in large grounds opposite the Werribee River, the Club boasts a wide range of facilities including 5 function rooms – large and small, restaurant, member's bar, kid's and teen's play area, TAB/Sportsbet kiosk, squash courts and ample parking.

Whether you need somewhere to hold your next dinner dance, conference, meeting, group get together or you're having a social sporting event, we have the range of facilities to accommodate you. We also cater for weddings, engagements and special birthday celebrations.

If you're having any kind of event at all, give us a call and let us help you out with the venue and catering. 44 years experience and all the happy customers can't be wrong!

Our à la carte menu is one to keep your taste buds happy... premium quality, fresh and delicious meals at affordable prices. Follow us on social media or visit us online to stay up-to-date with our weekly specials, promotions, in house functions and annual events.

*Visit us at the ISCW today...*



*The place to meet in the west!*



# Chirnsides BY THE RIVER

WHERE EVENTS LIVE

*A modern function venue for celebrations,  
conferences and corporate events*

**Chirnside Park | 220 Watton Street, Werribee VIC 3030**  
(03) 9741 6688  
info@chirnsidesbytheriver.com.au

## SHADOWFAX WINES



**K Road, Werribee**  
**03 9731 4420**  
**cellardoor@shadowfax.com.au**  
**www.shadowfax.com.au**

*s h a d o w f a X w i n e s*

Perfectly positioned between Melbourne and Geelong, in the heart of Werribee Park, Shadowfax is one of Victoria's best wineries and cellar doors.

With its unique architecture, landscaped surrounds and superb views of the vineyard, it offers an unrivalled setting.

Shadowfax's modern restaurant features a superb menu of Mediterranean food and a concise list of the winery's latest releases and museum wines. There's also live music every weekend.

It's a must-visit destination and idyllic place to enjoy with family and friends.

Open seven days, 11am-5pm.

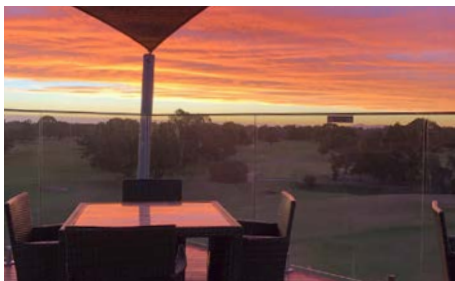


## THE PARK WERRIBEE

**12 Watton Street, Werribee**  
**03 9741 1441**  
**info@theparkwerribee.com.au**  
**theparkwerribee.com.au**

The Park is located in the hub of Werribee and is the social hive for Melbourne's west.

The venue includes an eatery that offers freshly prepared food with an American twist, a beer hall that offers an extensive list of craft beers including 23 rotating taps and multiple outdoor spaces where guests can enjoy a range of entertainment.



## THE VIEWS FUNCTION, BAR & GRILL

**350 K Road, Werribee South**  
**03 8742 0960**  
**admin@theviewsfunctionbargrill.com.au**  
**theviewsfunctionbargrill.com.au**

Come and experience Werribee's best kept secret. Just a short drive from Melbourne's CBD, our varied menus offer plenty of Australian-style dishes. Choose from fresh seafood dishes or opt for some meatier delights straight from the grill. With food this good and stunning views to boot, this is also the ideal location for your wedding or event.

Open Tue-Fri from 10am, Sat-Sun from 8am.



## WYNDHAM CACHE

**243 K Road, Werribee South**  
**03 9742 1526**  
**danyel@wyndhamcache.com.au**  
**wyndhamcache.com.au**

Located in the tourist precinct of Werribee South opposite the Werribee Open Range Zoo and historical Mansion, Wyndham Cache is the ultimate 'farm to fork' experience. The deli and café are open 7 days a week to the public showcasing a variety of locally farmed produce including farm fresh eggs. Only 30 minutes from Melbourne's CBD will have you experiencing a unique country experience.



# ENCORE

EVENTS CENTRE

Showcasing surprising spaces, inspiring food, great wine and outstanding staff to ensure a seamless event, from start to finish.

Encore Events Centre is the perfect location for your next event, with rooms that can cater for 20 to 1,000 people, making it great for meetings, conferences, celebrations, banquets and performances. We are a fully accessible venue with free onsite parking, 30 minutes from Melbourne CBD and only 25 minutes from Avalon Airport.



**Encore Events Centre** / [encoreeventscentre.com.au](http://encoreeventscentre.com.au)

1300 156 557 / [encore@wyndham.vic.gov.au](mailto:encore@wyndham.vic.gov.au) / 80 Derrimut Rd, Hoppers Crossing, VIC 3029

**AEROCHUTE INTERNATIONAL**

03 9354 2612 info@aerochute.com.au

Greens Road, Wyndham Vale  
aerochute.com.au**AQUAPULSE**

03 8734 5678 info@westernleisureservices.com.au

80-82 Derrimut Road, Hoppers Crossing  
aquapulse.wynactive.com.au**B-24 LIBERATOR**

03 9731 1263 liberator@b24australia.org.au

Cnr Princes Highway & Farm Road, Werribee  
b24australia.org.au**EAGLE STADIUM**

03 8734 5677 info@westernleisureservices.com.au

35 Ballan Road, Werribee  
eaglestadium.wynactive.com.au**ESSENCE PRODUCTIONS**

0439 690 091 info@essenceproductions.com.au

Werribee Park Mansion, K Road, Werribee South  
essenceproductions.com.au**LANTERN GHOST TOURS**

1300 390 119 enquiry@lanternghosttours.com

1 Point Cook Homestead Road, Point Cook  
lanternghosttours.com**LAVERTON SKATE CENTRE**

03 9369 4634 enquiries@lavertonskatecentre.com.au

2 Oakdene Grove, Laverton  
lavertonskatecentre.com.au**LITTLE RED TRAIN AT WERRIBEE PARK**

0433 223 557 mike@littleredtrain.com.au

Werribee Park Mansion, K Road, Werribee South  
littleredtrain.com.au**MAGNET FISHING CHARTERS**

0400 785 278 magnetfishingcharters@outlook.com

Werribee South Foreshore, Beach Road, Werribee South  
magnetfishing.com.au**MELBOURNE 4X4 PROVING GROUND**

03 9748 1202 melb4x4admin@bigpond.com

135 Dukelows Road, Mt Cottrell  
melbourne4x4.com.au**NATIONAL EQUESTRIAN CENTRE**

03 9741 7672 admin@wpnec.com.au

206 K Road, Werribee South  
wpnec.com.au**POINT COOK COASTAL PARK**

13 19 63 info@parks.vic.gov.au

Point Cook Homestead Road, Point Cook  
parkweb.vic.gov.au**POINT COOKE MARINE SANCTUARY**

13 19 63 info@parks.vic.gov.au

Point Cook Coastal Park, Point Cook  
parkweb.vic.gov.au**RAAF MUSEUM**

03 8348 6040 RAAF.MuseumInfo@defence.gov.au

RAAF Base Williams, Point Cook Road, Point Cook  
airforce.gov.au/raafmuseum**SANCTUARY LAKES GOLF CLUB**

03 9395 2888 club@sanctuarylakesclub.com.au

Sanctuary Lakes Boulevard, Sanctuary Lakes  
sanctuarylakesclub.com.au

**SHADOWFAX WINERY**

(03) 9731 4420    [cellardoor@shadowfax.com.au](mailto:cellardoor@shadowfax.com.au)

K Road Werribee, Werribee South  
[shadowfax.com.au](http://shadowfax.com.au)

**SUSANNE JENSEN GLASS - GALLERY**

0400 042 624    [susanne@susannejensenglass.com](mailto:susanne@susannejensenglass.com)

31 Beach Road, Werribee South  
[susannejensenglass.com](http://susannejensenglass.com)

**VICTORIA STATE ROSE GARDEN**

13 19 63    [info@vicstaterosegarden.com.au](mailto:info@vicstaterosegarden.com.au)

206 K Road Werribee, Werribee South  
[vicstaterosegarden.com.au](http://vicstaterosegarden.com.au)

**VINTAGE TIGER MOTH JOY FLIGHTS**

1300 138 207    [bookings@tigermothjoyflights.com](mailto:bookings@tigermothjoyflights.com)

RAAF William Point Cook, Point Cook Road, Point Cook  
[tigermothjoyflights.com](http://tigermothjoyflights.com)

**WERRIBEE HISTORICAL MUSEUM**

03 9749 2713    [wbeehist@vicnet.net.au](mailto:wbeehist@vicnet.net.au)

Cnr Watton Street & Duncans Road, Werribee  
[werribeehistory.org.au](http://werribeehistory.org.au)

**WERRIBEE OPEN RANGE ZOO**

03 9731 9600    [contact@zoo.org.au](mailto:contact@zoo.org.au)

K Road, Werribee South  
[zoo.org.au/werribee](http://zoo.org.au/werribee)

**WERRIBEE PARK GOLF CLUB**

03 9742 1397    [admin@werribeeparkgolf.com.au](mailto:admin@werribeeparkgolf.com.au)

350 K Road, Werribee South  
[werribeeparkgolf.com.au](http://werribeeparkgolf.com.au)

**WERRIBEE PARK HERITAGE ORCHARD**

13 19 63    [wph.orchard@gmail.com](mailto:wph.orchard@gmail.com)

K Road, Werribee South  
[werribeeparkheritageorchard.org.au](http://werribeeparkheritageorchard.org.au)

**WERRIBEE PARK MANSION**

13 19 63    [info@parks.vic.gov.au](mailto:info@parks.vic.gov.au)

Gate 2, K Road, Werribee South  
[parkweb.vic.gov.au](http://parkweb.vic.gov.au)

**WERRIBEE RACING CLUB**

03 9741 1800    [admin@werribee.countryracing.com.au](mailto:admin@werribee.countryracing.com.au)    [countryracing.com.au/werribee-racing-club](http://countryracing.com.au/werribee-racing-club)

Bulban Road, Werribee

**WERRIBEE RIVER REGIONAL PARK**

13 19 63    [info@parks.vic.gov.au](mailto:info@parks.vic.gov.au)

Old Geelong Road & New Farm Road, Werribee  
[parkweb.vic.gov.au](http://parkweb.vic.gov.au)

**WESTERN TREATMENT PLANT - BIRD WATCHING**

13 17 22    [melbournewater.com.au/community-and-education/recreation/birdwatching](http://melbournewater.com.au/community-and-education/recreation/birdwatching)

New Farm Road, Werribee

**WYNCITY BOWL & ENTERTAINMENT**

03 9236 8383    [info@wyncity.com.au](mailto:info@wyncity.com.au)

36 Wallace Avenue, Point Cook  
[wyncity.com.au](http://wyncity.com.au)

**WYNDHAM CULTURAL CENTRE AND ART GALLERY**

03 8734 6000    [boxoffice@wyndham.vic.gov.au](mailto:boxoffice@wyndham.vic.gov.au)

177 Watton Street, Werribee  
[wyncc.com.au](http://wyncc.com.au)

**WYNDHAM HARBOUR**

03 9233 8530    [marina@wyndhamharbour.com.au](mailto:marina@wyndhamharbour.com.au)

Quay Boulevard, Werribee South  
[wyndhamharbour.com.au](http://wyndhamharbour.com.au)



# Itineraries

**There are so many ways to experience our region.  
Here are a few itineraries to help get you started.**

Tackle them individually or string them together to  
create your own unique adventure.



## FAMILY FUN DAY

- Start the day with amazing wildlife and a Safari Tour at **Werribee Open Range Zoo**.
- Explore **Werribee Park Mansion** with hands-on fun in a Victorian children's room and acres of gardens to explore.
- Refuel with burgers and milkshakes at **Truckstop Deluxe**.
- Burn off some energy with tenpin bowling at **Wyncity Bowl & Entertainment** or waterslide fun at **AquaPulse**.
- Wind down with fish and chips and a wander along the **Werribee South Foreshore**.



## WEEKEND GETAWAY DAY 1:

- Enjoy morning coffee at **Wyndham Harbour** and stroll down to **Werribee South Foreshore**.
- Follow the **Bay West Driving Trail**, taking in fabulous views of the **K Road Cliffs** and **Werribee River**.
- Explore the cellar door and enjoy a long lunch at **Shadowfax Winery**.
- Check into **Lancemore Mansion Hotel Werribee Park** and relax with a spa package, or a dip in the pool.
- Indulge your palate with dinner at **Joseph's Restaurant & Bar**.

## DAY 2:

- Enjoy a leisurely hotel breakfast.
- Take a walk on the wild side, with a behind-the-scenes encounter at **Werribee Open Range Zoo**.
- Enjoy a picnic lunch on the Great Lawn at **Werribee Park Mansion**.
- Take your time to explore the **Victoria State Rose Garden** before you go!



Visiting Victoria's Parks

# Werribee Park







# Werribee Park and Werribee Mansion

Enjoy a perfect day out at Werribee Park. Experience the grandeur of Werribee Mansion, discover Victoria's unique pastoral history, or relax with family and friends on the Great Lawn surrounded by stunning formal gardens.



## Formal gardens

Entry to the idyllic gardens of Werribee Park is free. Escape the hustle and bustle of everyday life and enjoy the colourful parterre and ornamental lake and grotto. Children and adults alike will love roaming free across the lush lawns.

## Tour the mansion

Step back in time as you enter the opulent mansion. Discover the story behind the success of the Chirnside family and learn what it was like to live in the Victorian era with an insightful and entertaining audio tour.

## Victoria State Rose Garden

Winner of the prestigious World Federation of Rose Societies Award for Garden Excellence, this internationally acclaimed garden is a must see.

Delight in the colour and fragrance of over 5000 roses, displayed to perfection, in bloom from October to May and at their most magnificent from November to April.

## Farm and Community Garden

Stroll down to the original farm area where rustic bluestone outbuildings, once abuzz with workers and activity, provide a stark contrast to the luxury of the Mansion. The area has now been revitalised by the local community and provides a modern centre for gardening and horticulture activity.

## Riverine

Wander down to the tranquil riverine where Parks Victoria is working closely with the local community to ensure that the unique history of this area is protected for the benefit of generations to come.

**Top** | Werribee Mansion and its idyllic formal gardens

**Left** | Fish in the Werribee River at Werribee River Park



Located just 30 minutes from Melbourne by car, Werribee Park is so easy to get to and entry to the gardens is free.

#### Location

Gate 2, K Road, Werribee, VIC 3030

#### Opening hours

Car park opening: 9am  
Entry to the gardens is free  
Mansion opening: 10am  
Mansion entry fees apply.

#### Getting there

**By car:** Werribee Park is located 30 mins south west of Melbourne CBD. Entry to the car park is via gate 2 on K Road.

**By public transport:** take the Werribee line train to Werribee Station, then take bus route 439 to Werribee Park.

**By bicycle:** follow the Werribee River Park trail to Werribee.

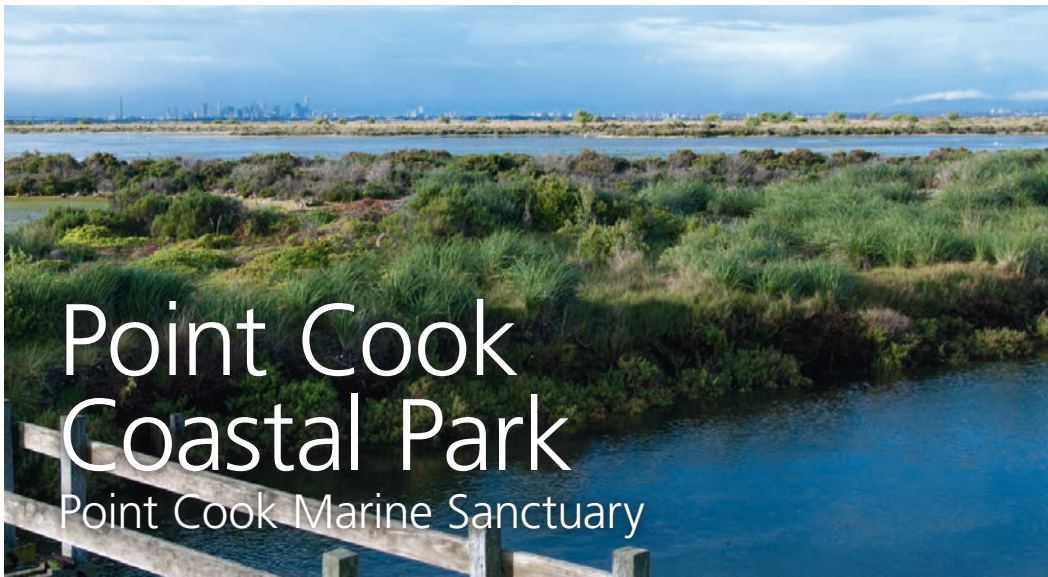
#### Facilities



**Top** | Learn about the farm and community garden

**Right** | Picnic in the beautiful formal gardens





# Point Cook Coastal Park

## Point Cook Marine Sanctuary

Experience a rich natural and historical environment in this remarkably large, and seemingly remote park setting close to Melbourne.

Relax and picnic alongside a migratory bird habitat of international significance, a marine sanctuary and historical homestead.

### Facilities



### Beach picnic area

The beach picnic area is the perfect place for a family picnic with gas BBQs, picnic tables, shade shelters, toilets, a children's playground and beach access. The park is crossed by kilometres of mowed grass tracks and good walking is available along the beach at low tide.

### Birdlife

Each year, thousands of migratory birds arrive from the northern hemisphere winter to enjoy the wetlands habitat of Port Phillip Bay. Visitors may see Greenshanks, Sharp-tailed Sandpipers, Red-necked Stints, Curlew Sandpipers, Marsh Sandpipers and Pacific Golden Plovers. Numbers reach a peak between September and March.

**Top** | Views to Melbourne from Point Cook Coastal Park

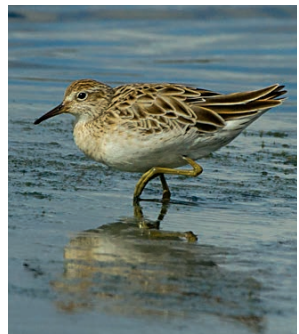
**Right** | The migratory Sharp-tailed Sandpiper

### Cheetham Wetlands

Nearby Cheetham Wetlands are also a natural bird haven, formed from the salt marshes and lagoons of Skeleton Creek. Enjoy beautiful views of the city and the You Yangs. The adventurous will enjoy the magnificent 360 degree view from the Tower built as a dedication to "Migration and Aspirations".

### Getting there

Travel for 6km to the main entrances on Pt Cook Road and Homestead Road.





# Getting Here

**Getting to Werribee is a breeze, as we're perfectly located 30 minutes from Melbourne and Geelong.**

## **BY CAR**

Take the Princes Fwy M1 from Melbourne CBD or Geelong to arrive in an easy 30 minutes.

## **BY TRAIN**

Check Metro, V/Line and Regional Rail timetables for regular services from Melbourne and Geelong to Werribee. Connect to taxis and buses at Werribee Train Station. Refer to Public Transport Victoria (PTV) guides for details.

## **BY AIR**

Werribee is an easy drive from Melbourne Airport (40 minutes) and Avalon Airport (20 minutes). Collect a rental car at the airport or take advantage of the Skybus Airport Shuttle. Its express airport service can connect you directly from Avalon or Melbourne Airport in no time via [skybus.com.au](http://skybus.com.au).

## **BY SHUTTLE BUS**

Book a private shuttle bus or small group charter from central Melbourne to Werribee Park Precinct, Werribee South Foreshore, RAAF Museum and Point Cook Coastal Park. Book direct with [werribeeParkshuttle.com.au](http://werribeeParkshuttle.com.au).

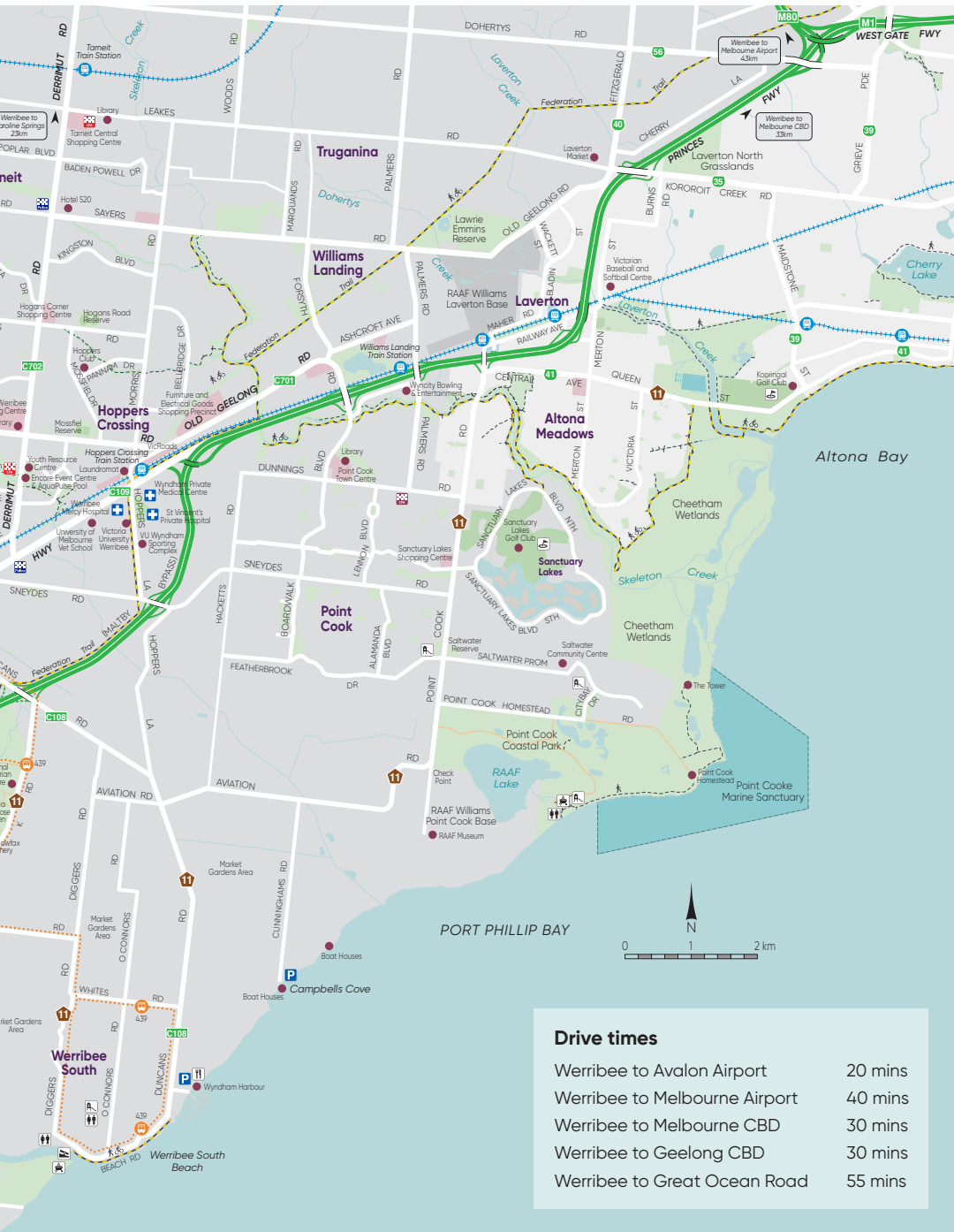
# International? So easy.



[avalonairport.com.au](http://avalonairport.com.au)

  
**Avalon Airport**  
*Flying made easy*



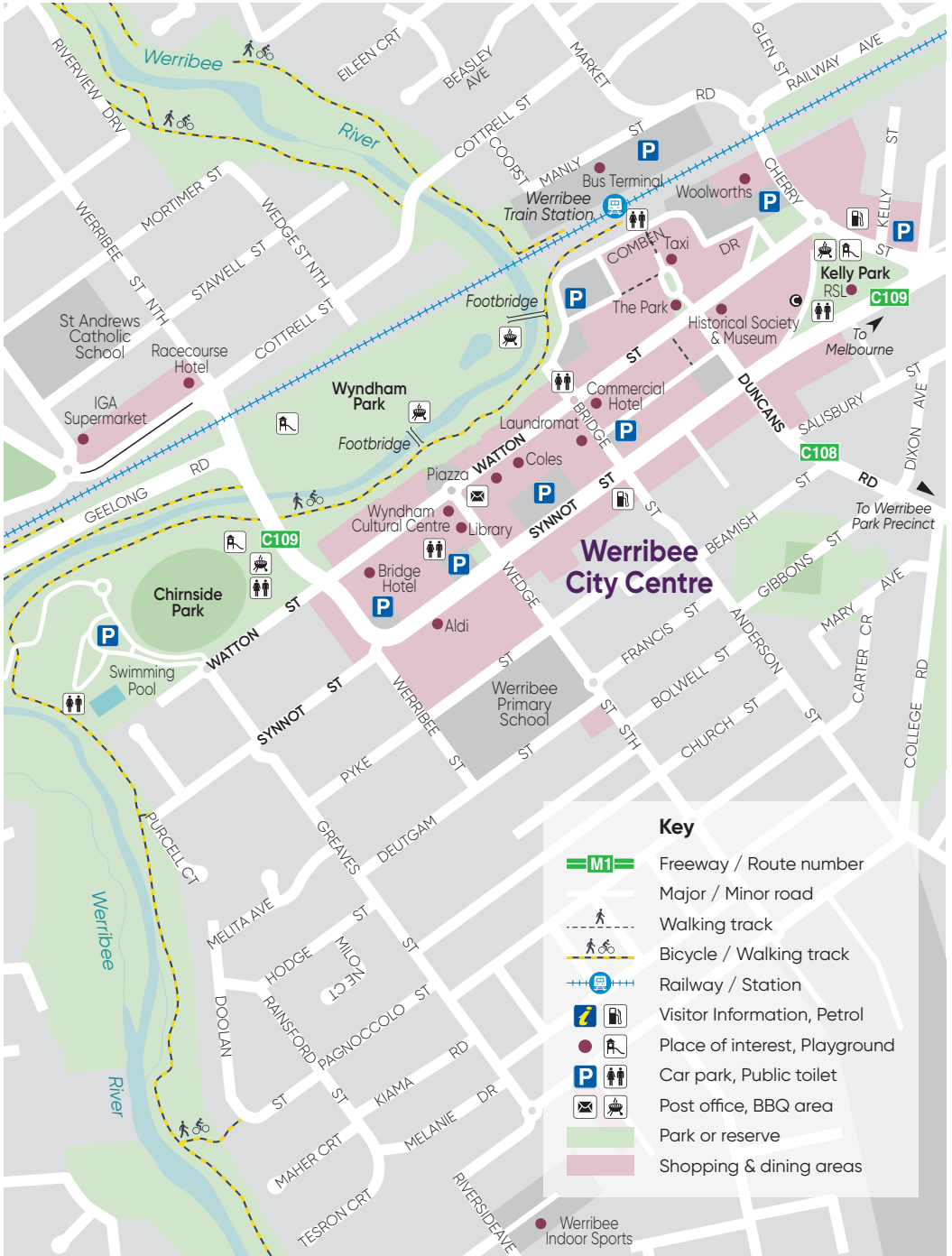


**Drive times**

Werribee to Avalon Airport	20 mins
Werribee to Melbourne Airport	40 mins
Werribee to Melbourne CBD	30 mins
Werribee to Geelong CBD	30 mins
Werribee to Great Ocean Road	55 mins



# WERRIBEE CITY CENTRE MAP



## Key

- Freeway / Route number
- Major / Minor road
- Walking track
- Bicycle / Walking track
- Railway / Station
- Visitor Information, Petrol
- Place of interest, Playground
- Car park, Public toilet
- Post office, BBQ area
- Park or reserve
- Shopping & dining areas

● Werribee Indoor Sports



# Visitor

## INFORMATION CENTRE

### WERRIBEE VISITOR INFORMATION CENTRE

Look no further than the local Visitor Information Centre for an insider's guide on where to go, what to see and what not to miss. Our volunteers' local knowledge will open your eyes to new experiences and provide insights to the region's best-kept secrets. Pick up maps, brochures and local tips to craft your own adventure.

**Open daily 9am-5pm**

### THE SPIRIT OF VOLUNTEERING

At the heart of every major attraction in the region, you'll find volunteers who love to share their knowledge with visitors. Stop for a chat to tap into their wealth of wisdom and hear some remarkable tales.

### YOUR 24/7 GUIDE TO WHAT'S ON

For more information on events, restaurants, attractions and things to do, head to **visitwerribee.com**. Follow us on Facebook and Instagram and share your experiences using **#visitwerribee**.



**visitwerribee.com**

**f** **@**VisitWerribeeandSurrounds



**Werribee Visitor Information Centre**  
**(Located at the entry to Werribee Open Range Zoo)**  
**K Road, Werribee South**  
**03 8734 6006**  
**tourism@wyndham.vic.gov.au**



# There are many reasons to dock at Wyndham Harbour

Our fully-equipped marina can accommodate yachts, power boats and PWCs, and as our guest, you'll also have access to our new 24/7 Fuel Dock and other member facilities.

---

**12-MONTH TRIAL BERTH OFFER ONLY \$5,895\***

---

\*Conditions Apply

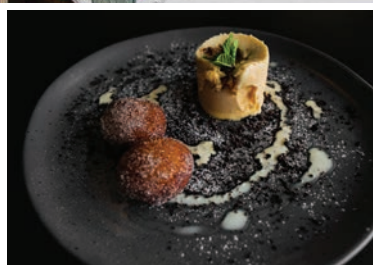
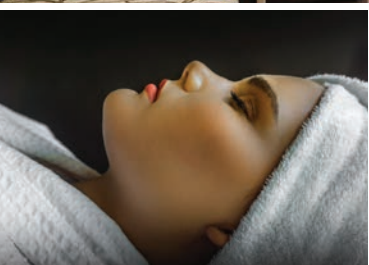
So relax, take it easy and discover more reasons why boaties are calling Wyndham Harbour home.

**WYNDHAM  
HARBOUR**

For more information call the Marina Office on (03) 9233 8530  
[wyndhamharbour.com.au](http://wyndhamharbour.com.au)



30 minutes from Melbourne & Avalon Airports



# *Relax in luxury*

Accommodation

Wedding & Reception Centre

Cinnamon Bay Restaurant

Day Spa

03 8376 5300

[www.seasons5.com.au](http://www.seasons5.com.au)

454 Point Cook Rd, Point Cook Vic 3030

